

# Family Fun

## in Greenville, South Carolina



Your answer to the age-old question:  
*"What should we do today?"*

Homecourt  Publishers

■ Greenville, SC

# Take me out to a ball game...



## Greenville Drive Baseball

— Class A Baseball Team  
Area: Downtown Greenville (West End)

The Greenville Drive is a minor league baseball team in the area (South Atlantic League) that is a Class A affiliate of the Boston Red Sox. It's also a great opportunity for some family fun, largely thanks to the layout of Fluor Field that opened back in 2006.

For starters, the playing field is a replica of Fenway Park, home of the Red Sox, including the signature "Green Monster" out in left field (the wall is 30' high, as opposed to 37' at Fenway). But it's more than that. The folks who put on the Greenville Drive games have done an excellent job of providing the "full entertainment package." The facilities are excellent — there's even a playground for those who are too young to enjoy the game for a full 9 innings. And the vibe is great, with the fireworks after a homerun and the tradition of singing "Sweet Caroline" during the 8th inning.

Of course, the Greenville Drive roster consists of young men who are hanging onto a dream of playing in the Big Leagues. Every game counts for them, and it's something you'll appreciate as a spectator.

Fluor Field  
945 S. Main St.  
Greenville, SC 29601

(864)-240-4500

Season runs from  
April to September

Prices range from  
**\$5.00** for pre-purchased  
deck or lawn seats  
to  
**\$9.00** for same-day  
Box Seats

(season ticket packages  
also available)

*A major factor in the popularity of the Greenville Drive was the construction of a new stadium in the West End. Nicknamed "Little Fenway", **Fluor Field** was built for around \$15 million and seats 5,700 people.*



*A slightly smaller replica of Fenway's "Green Monster" wall sits in left field*





### a laid-back atmosphere...

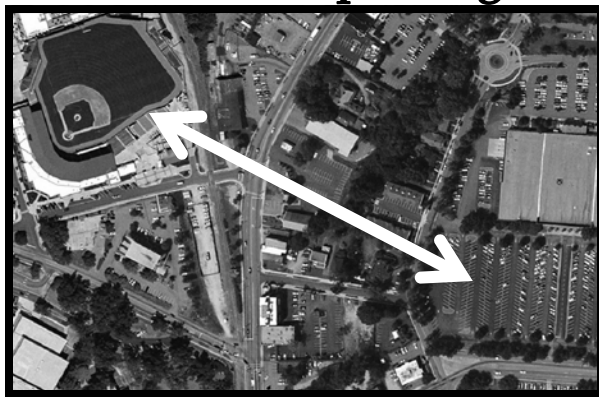
One of the best parts about going to a Greenville Drive game with the family is that there's nothing that makes you feel like you need to sit still and be quiet. There are plenty of places to get up and walk around, and when your kids start to lose interest late in the game, there's a **playground** just above left field.

### a virtual museum...

A walk around Fluor Field is like walking through a museum about minor league baseball in Greenville. It seems like each wall or column has a display on the textile mill teams, or the stars who rose through the ranks, or the different teams that once called Greenville home.



### a bit about parking...



When you're going to a Greenville Drive game, there is **FREE parking** at the huge County Square parking lot (on University Ridge Road), and then **a trolley will take you to the game.**

## Paris Mountain State Park

Area: Near Hwy 25 & Cherrydale Area



**Paris Mountain** is an interesting geological feature on the outskirts of Greenville. You're driving through town—past movie theaters and restaurants and bumper to bumper traffic—and there it is. A mountain, just as the name suggests, sitting right in front of you.

Named for Richard Pearis, Greenville's first white settler (as for the spelling difference, your guess is as good as ours), Paris Mountain had its heyday around the 1940s, but it is very much a worthwhile escape today. You can rent a paddleboat for a half hour on a hot summer day, or take the family camping one night and be back in the house by lunchtime the next day. It's definitely a refreshing outing.

2401 State Park Road  
Greenville, SC 29609

(864)-244-5565

*Activities:*

Hiking / Mountain Biking  
Paddle Boating / Canoeing  
Fishing  
Lake Swimming  
Camping  
Picnicking

Daylight Savings Hours:  
8 AM—9 PM

Winter Hours:  
8 AM—6 PM

\$2.00 entry fee  
(kids under 15 are free)

Paris Mountain saw its greatest crowds over 50 years ago, but it's still a great place to:



*rent paddle boats and canoes to take on Lake Placid*

*take a hike or mountain bike ride (trails range from very easy near the bottom to challenging further up)*

*find a camping spot, or just a place to have a picnic*



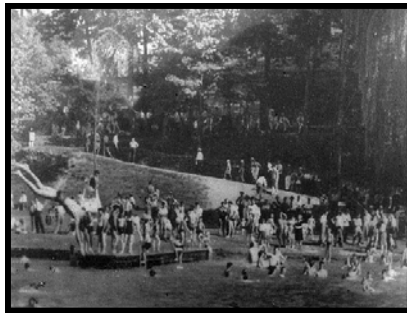


The 13-acre **Lake Placid** and the miles of **hiking trails** make Paris Mountain a perfect getaway just minutes away from downtown Greenville



## Quite a History...

The photo below shows Paris Mountain's Lake Placid during its heyday in the 1940s. It's a little more serene now (to the right), but you can go swimming during the summer.



In 1890, the city of Greenville started using Paris Mountain as a source for drinking water (the lakes in the park were built as reservoirs). It served in this role until the Great Depression, when a New Deal project aimed at turning the park into a recreational area. Shown below is the "Bath House", which was built in the 1930s (shown to the left under construction) and now serves as the park's offices.



# Artisphere



**Area: Downtown Greenville (and beyond)**

First of all, kudos on having a great name for this festival. It's hard not to get excited if you're about to enter the "Artisphere." The **Artisphere** is a festival on S. Main Street where artists (local and otherwise) come to display their craft along Artist's Row. It's also a time when art museums (i.e. Bob Jones Gallery, Greenville Art Museum, and so on) from around town step in to schedule events and bring attention to the arts when they have the public's ear.

Artisphere is a Friday - Sunday weekend in May

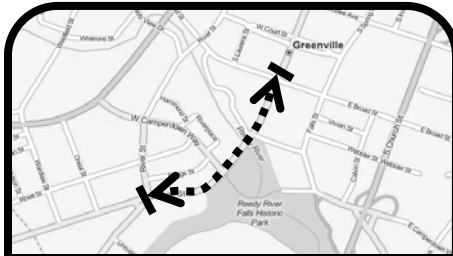
**Outdoor Festival Hours:**

Friday: 4-8 PM  
Saturday: 10AM-8 PM  
Sunday: 11AM-6 PM

**Kidsphere Hours:**

Saturday: 10AM-7PM  
Sunday: 11AM-5PM

**Artisphere is FREE for the outside festival.**



"Artist's Row" is on S. Main St. from the Greenville News building, past Falls Park, and to Augusta St.

Other events are held in the Peace Center, art museums, and other venues across town.

And

it's not just visual art. There is a variety of performance art taking place around downtown, from the Peace Center to local theaters to small cafés.

And then there's the "culinary arts," which is a definite draw to the festival. Many of the areas finest restaurants serve as street vendors, serving up the best they have to offer for just a few tickets.

## Just a thought:

*The best part about downtown Greenville is that you don't have to do much to enjoy it with the family. There is so much positive energy, that just walking around and taking it all in is enough.*

*That only gets intensified when a street festival comes to town. You don't need a set agenda. All you have to do is **walk around and take in the sights.** There will be plenty of them!*



**A street performer setting the tone at Artisphere.**

*Over 50,000 people go through Artisphere over the course of the weekend, and it is among the top 10 Fine Arts shows when it comes to sales of artwork (which may explain how it manages to draw artists from across the country.*



*So what qualifies as art? Well, there may not be a strict definition, but here's the type of artistic mediums that have displayed on "Artist's Row" in the past:*

- ◆ paintings
- ◆ pastels
- ◆ woodworking
- ◆ photography
- ◆ sculpture
- ◆ jewelry
- ◆ prints
- ◆ glass
- ◆ ceramics
- ◆ fiber
- ◆ metalworks
- ◆ furniture



## Kidsphere

Artisphere is well worth taking the family just to feel the energy, do some people-watching, and see what's out there. Since it takes place in May, chances are it'll be a nice day to stroll downtown.

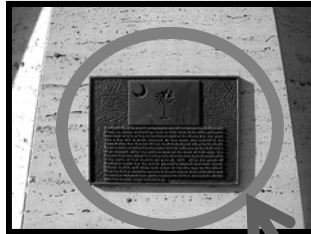
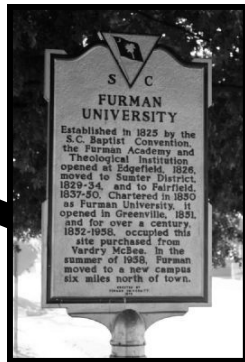


There's also **Kidsphere** to make sure that the young ones get involved. This is on Saturday and Sunday over at Wyche Pavilion (the roofless brick structure behind the Peace Center), and it has a range of arts and crafts where kids can try their hand with some of the displays they've seen along Main Street. The children also get to talk to some of the artists at the festival.

# Walk among the history...

The history of Greenville isn't a secret. It's out there for everyone to see, and this can be proven with just a stroll downtown. Take the family on a **historic scavenger hunt**, and you'll see plenty of the following:

## Historical plaques and markers that highlight important people, places, and things...



★ The front of the Greenville News Building (AKA Roger Craft Peace Plaza) is like an **outside museum** with plaques and markers on each of its columns



## Monuments that tell the story of Greenville...



**Max Heller Plaza**  
(a tribute to the mayor who paved the way for the **revitalization of downtown**)



**Sterling High School Memorial**  
(a tribute to a high school that played a huge role during the **Civil Rights Movement**)



**Statues that honor Greenville's finest residents...**

*A few are shown here. Clockwise from the top left, they are:*

- **Vardry McBee—landowner, philanthropist, and the “Father of Greenville”**
- **Charles H. Townes—inventor of the laser and Nobel Prize winner**
- **Nathanael Greene—Revolutionary War hero and Greenville’s namesake**
- **Joel Poinsett—Ambassador to Mexico and namesake for the Christmas flower**
- **“Shoeless” Joe Jackson—a textile worker who turned into a baseball legend**



★ There are nearly 200 historical markers scattered in and around Greenville. If that excites you, you need to check out the **Historical Markers Database**, which summarizes each one (including photos and text). Go to the site below and select Greenville, South Carolina:

[www.hmdb.org/CountiesList.asp](http://www.hmdb.org/CountiesList.asp)

# Now, that's a lot of lights...



## Roper Mountain Holiday Lights

Area: Near Intersection of I-85 & I-385

As a kid, you remember that one house down the road that went crazy with the Christmas lights. And then there's that neighborhood where the one house that *did not* go overboard with the decorations is the one that looks silly next to the ones that did.

Well, what if you took the whole side of a mountain and covered it with lights? It would certainly get you into the Christmas spirit, wouldn't it?

That's basically the concept of the **Roper Mountain Holiday Lights**. You drive through a road that winds through the acres of land that make up the Roper Mountain Science Center, and at every turn there are more lights for you to take in. There are lighted stars, lighted Santa, lighted reindeer that appear to be jumping over the road... you get the idea.

There's also an area where you can park your car and get out and walk through a "Winter Wonderland," and even take pictures with Santa.

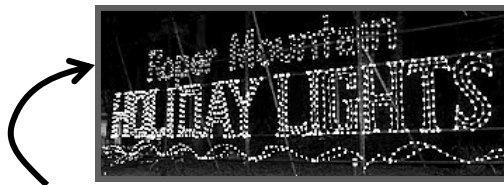
This is definitely one of those "check-off-the-list" activities during the holiday season, and it's a good way to jumpstart the Christmas Spirit.

Roper Mtn. Science Center  
402 Roper Mountain Rd.  
Greenville, SC 29615

(864) 355-8900

6 PM - 10 PM nightly  
Thanksgiving - Dec. 30th

\$10.00 per car



We know that a black-and-white picture is an insult to Christmas lights everywhere, so the Roper Mountain Lights are just something you'll have to see in person!

## Just how big is this thing?

*Some facts to help you get an idea about the scale of the Holiday Lights...*

- ◆ **The lights are visited each year by more than 80,000 people in nearly 20,000 cars.**
- ◆ **The event raises well over \$100,000 for charities and educational programs in the Upstate each year.**
- ◆ **It takes 600 volunteers about 4,000 working hours to put up and take down the lights. They begin work in early September.**
- ◆ **There are nearly 1,000,000 lights on display (that's equal to putting up over 3,000 6' tall Christmas Trees).**
- ◆ **During the offseason, the lights are stored in a nearly 5,000 square foot warehouse, part of which becomes Santa's Workshop during the holidays.**
- ◆ **There are over 100 individual light displays setup across Roper Mountain.**
- ◆ **It takes one person an hour to flip the switch on all of the light displays each night across Roper Mountain.**
- ◆ **The electricity bill for the display approaches \$10,000 each year.**
- ◆ **The Star that sits atop Roper Mountain (the Buck Mickel Star) is almost 100 feet tall and features 2,500 lights.**



# Family Fun

**Order Form**

**in Greenville, South Carolina**

1 copy = \$14.95 x \_\_\_\_\_ total copies = \$ \_\_\_\_\_

Subtotal = \$ \_\_\_\_\_

6% SC Sales Tax = \$ \_\_\_\_\_

FREE SHIPPING!!! = \$ 0.00

**TOTAL** = \$ \_\_\_\_\_

If sending this order form with a check, please provide the address where you would like books to be shipped:

\_\_\_\_\_  
\_\_\_\_\_  
\_\_\_\_\_  
\_\_\_\_\_

- To order over the phone via credit card, call (864)-877-5123
- To order online, go to [www.greenvilleisgreat.com](http://www.greenvilleisgreat.com)
- To order by check, send payment and this form in an envelope to:

**Homecourt Publishers**

2435 East North St., #245  
Greenville, SC 29615-1442

*For more information, contact:*

**Ben Bache, managing editor**  
(864) 877-5123  
[benbache@homecourtpublishers.com](mailto:benbache@homecourtpublishers.com)